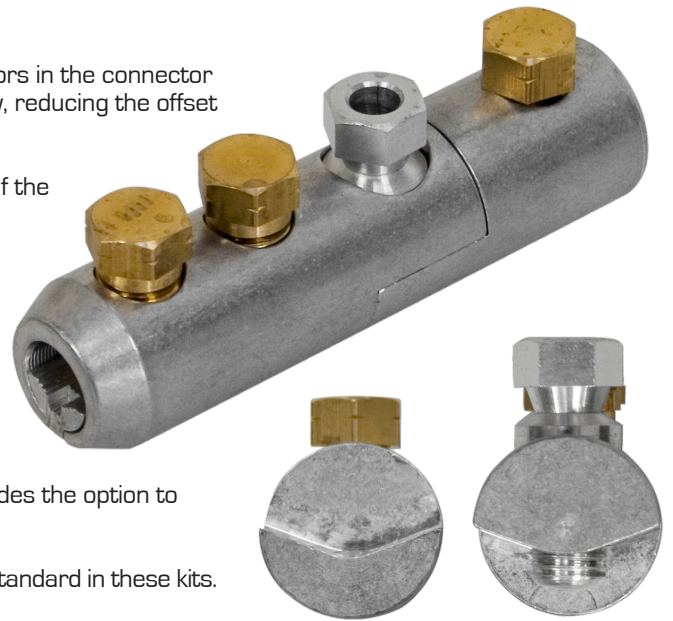




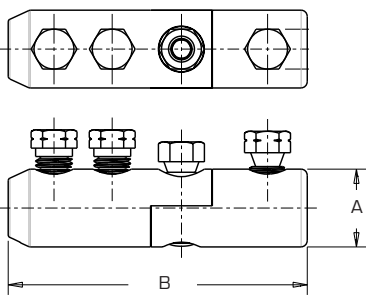
Magnefix Mechanical Connector

Used to terminate conductors to Holec (Magnefix) switchgear, the Tyco Electronics range of mechanical connectors is ever growing and the latest addition is the Magnefix range of switchgear connectors. Mechanical connectors have many benefits for both the user and the inventory manager. These connectors are range taking, reducing inventory as three connectors will cover conductors from 16mm² - 300mm².

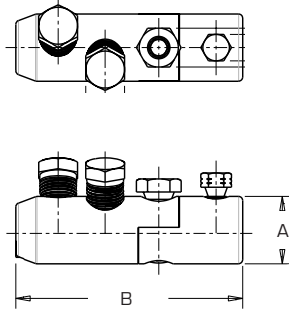
- Magnefix connectors have a shim used with the smaller conductors in the connector range. The shim centralises the conductor in the connector body, reducing the offset when the connection is made.
- The V shape of the connector faces increases the contact area of the connector.
- The two interlocking V faces pull the two connector halves into alignment as they are tightened ensuring a straight connection.
- The manufacturing tolerances used ensure that the upper and lower V faces are always in complete contact when the centre joining bolt is tightened and sheared off.
- The centre bolt can be removed with an Allen Key and replaced with an approved connector replacement bolt. This feature provides the option to disconnect the cable from the switchgear for cable testing.
- Compatible with Raychem heatshrink terminations and will come standard in these kits.



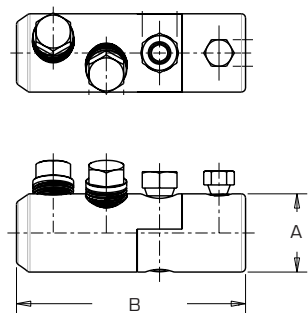
BSMV-16/95-MFX



BSMV-95/240-MFX



BSMV-120/300-MFX



CATALOGUE NUMBER	CABLE SIZE XLPE mm ²	CABLE SIZE PILC mm ²	DIA mm A	LENGTH mm B	BOLT SIZE A/F mm		REPLACEMENT BOLT
					MAIN	CENTRE	
BSMV-16/95-MFX	25-95	16-70	25.4	98	13	13	BAH-017020041
BSMV95/240-MFX	95-240	95-185	33	111	19	13	BAH-017020040
BSMV120/300-MFX	120-300	120-240	38.35	112	17	13	BAH-017020047

Tyco Electronics Mechanical Magnefix Connectors are made to comply with requirements of IEC61238